

## QVI® FlexPoint 111/212

QVI FlexPoint™ is a flexible industrialized and rugged alternative to custom hard gaging. FlexPoint is designed for measurement of small precision parts.

With the stability of a granite structure and its air bearing motion system, FlexPoint is equally at home on the manufacturing floor or in the QC laboratory.

- Choice of TP20 or TP200 touch probe
- Shop floor friendly
- QVI ZONE3 premium CAD-based 3D metrology software

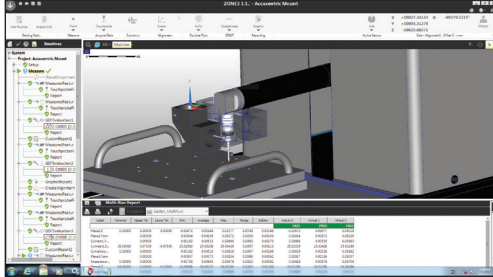
	X	Y	Z
Travel (mm) of FlexPoint 111	160	100	160
Travel (mm) of FlexPoint 212	220	160	220

**High Accuracy  
Flexible Gaging System**

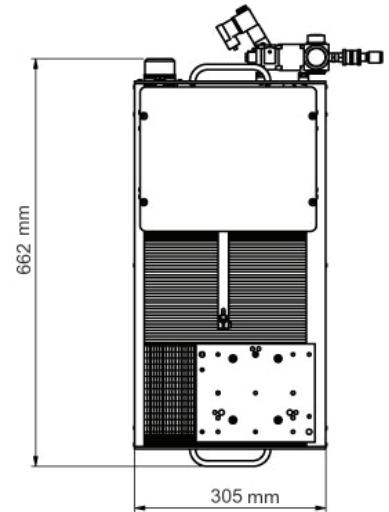
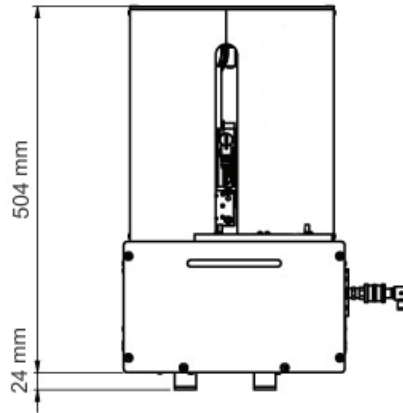


## ZONE3™ Measurement Software

ZONE3 is QVI's premium CAD-based 3D metrology software. It features a clear, simple user interface, and its kinematic model simulates the machine, part, fixtures and sensor, updated in real-time. Productivity maximizing tools and visual validation of measurement intent offer speed and power to your measurement process.



Machine weight: 48 kg  
Crated weight: 100 kg



111 Model Shown

	Standard	Optional
<b>XYZ travel, FlexPoint 111</b>	160 x 100 x 160 mm	
<b>XYZ travel, FlexPoint 212</b>	220 x 160 x 220 mm	
<b>XYZ scale resolution</b>	0.5 µm	0.1 µm temperature invariant
<b>Drive system</b>	DC servo with 3-axis control (X,Y,Z); multifunction handheld controller	
<b>Maximum recommended load</b>	7 kg	
<b>Maximum velocity</b>	250 mm/sec	
<b>Probe configurations</b>	Required Selection: • TP20 touch probe • TP200 touch probe	
<b>Controller</b>	Windows® based, with up-to-date processor and on board networking/communication ports	
<b>Controller accessory package</b>		24" flat panel LCD monitor, or dual 24" flat panel LCD monitors; keyboard, 3-button mouse (or user supplied)
<b>Software</b>	<b>QVI Portal, including:</b> • Portal Navigator • Independent Calibration Engine (ICE) • Multimedia Content Viewer • SmartLink™ • QVI ZONE3 metrology software	<b>Productivity software:</b> SmartProfile®, SmartReport®
<b>Power requirements</b>	115/230 vac, 50/60 Hz, 1 phase, 700 W	
<b>Air requirements</b>	Clean, dry compressed air at 4 bar (60 psi)	
<b>Rated environment</b>	Temperature 18-22° C, stable to ±2° C (±4° F); 30-80% humidity; vibration <0.0015g below 15 Hz	
<b>Operating environment, safe operation</b>	15-30° C	
<b>Accuracy¹</b>	MPE <sub>e</sub> = (1.0 + L/300) µm; Max = 1.5 µm (with TP20)	

<sup>1</sup>Where L = measuring length in mm. Applies to thermally stable system in rated environment, with a certified artifact at 20° C. Maximum rate of temperature change: 2° C/hour. Maximum vertical temperature gradient: 1° C/meter. Compliant with ISO 10360 Standards.



Phone: (585) 544-0400 • (800) 647-4243  
 Fax: (585) 544-8092  
 info@ogpnet.com  
 www.ogpnet.com

